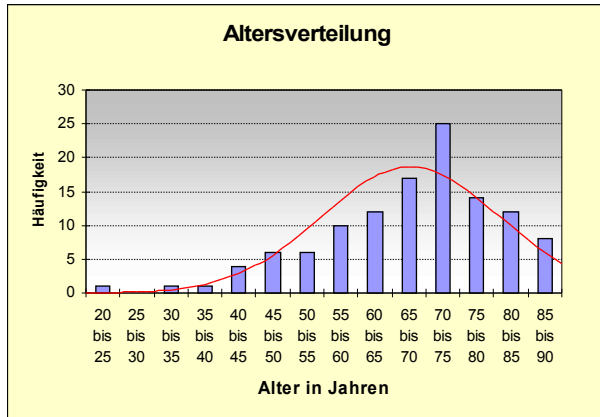


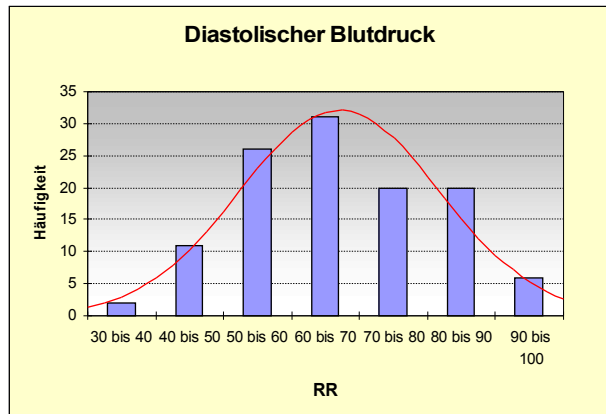
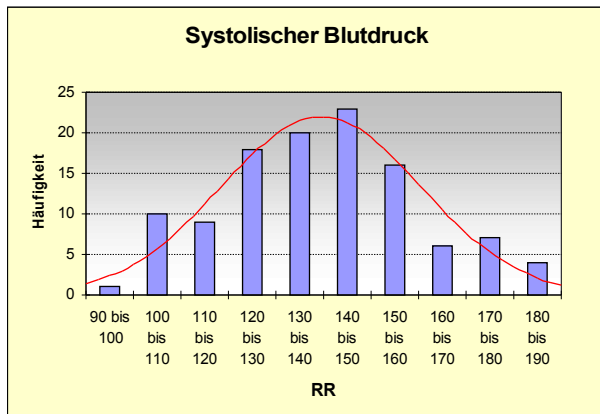
## QS 4. Quartal 2008

### Altersverteilung:



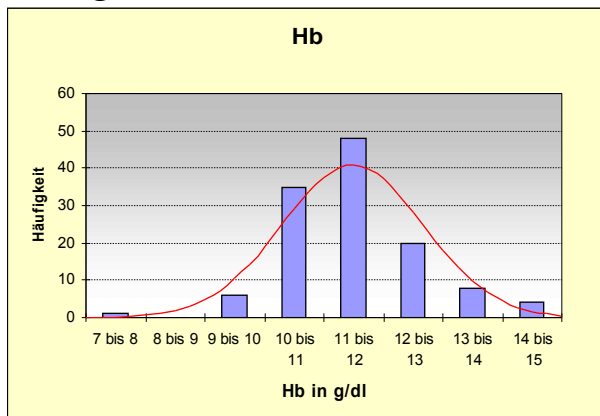
50,4 % älter als 70    29,1 % älter als 75    17,1% älter als 80

### Blutdruck:

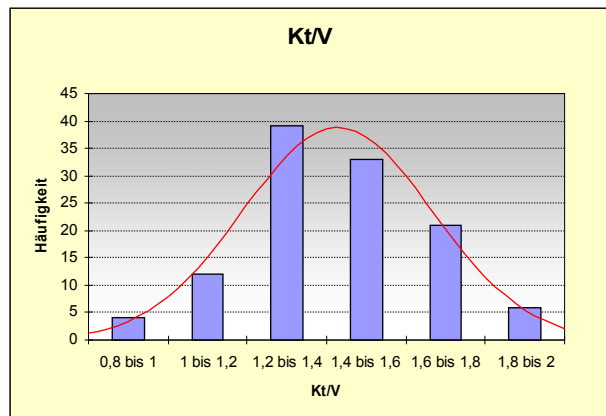


Mittelwert: 138,0/67,1

### Hämoglobin:



### Kt/V:

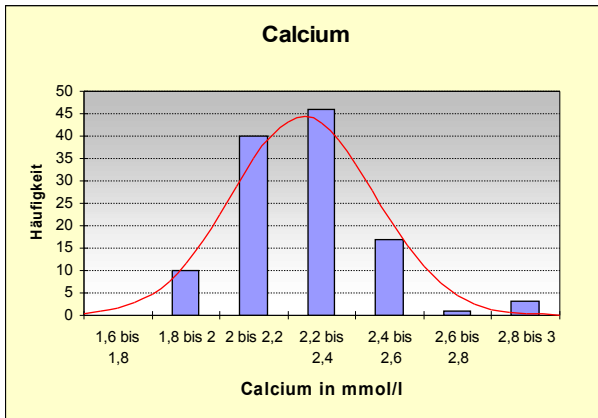


5,7 % < 10g/dl – Mittelwert 11,4 ± 1,2

13,9 % < 1,2 – Mittelwert 1,46 ± 0,3

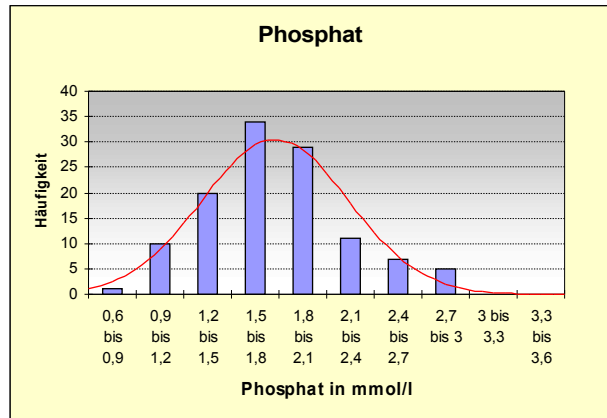
Übersicht QS-Daten Quartal 4/2008  
Dialysezentrum Landshut

**Calcium:**



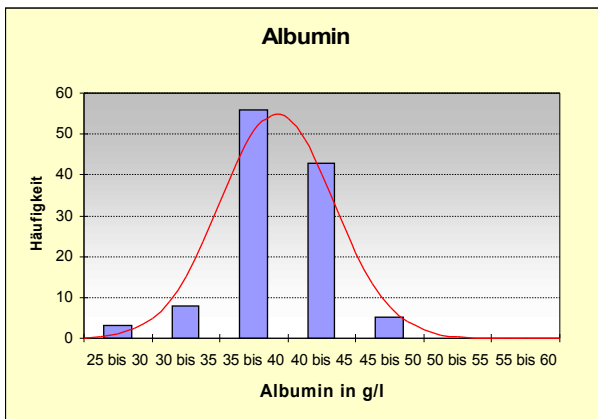
Mittelwert: 2,19

**Phosphat:**



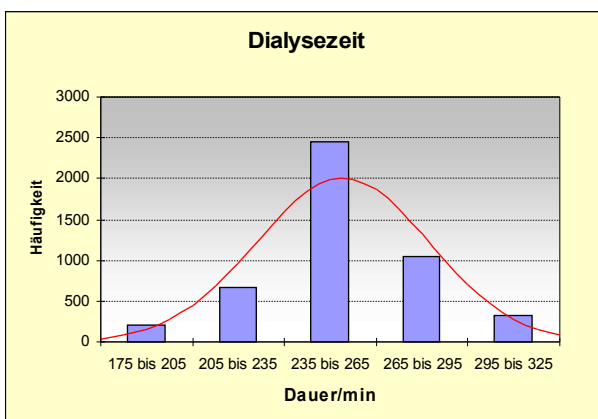
Mittelwert: 1,73 55,6% < 1,8

**Albumin:**



Mittelwert: 38,4 g/l – 58,3 % < 40 g/l

**Dialysedauer:**



18,5 % **aller** Dialysen lagen unter 235 min