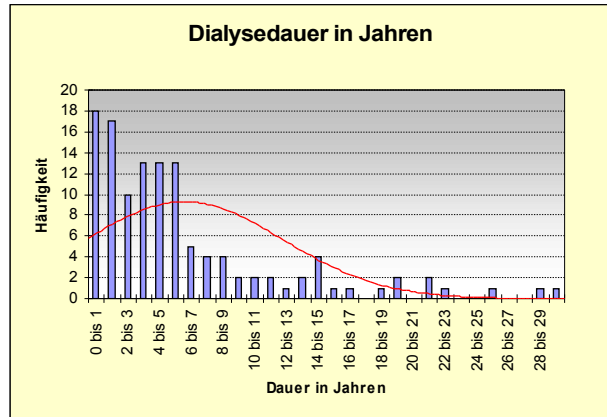
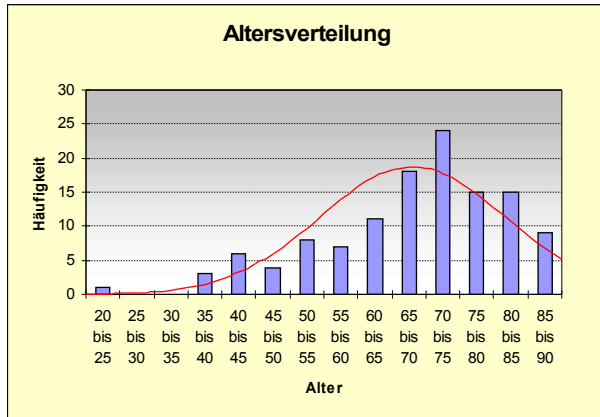


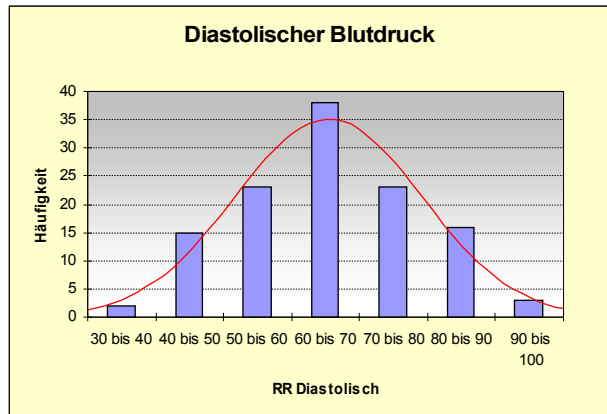
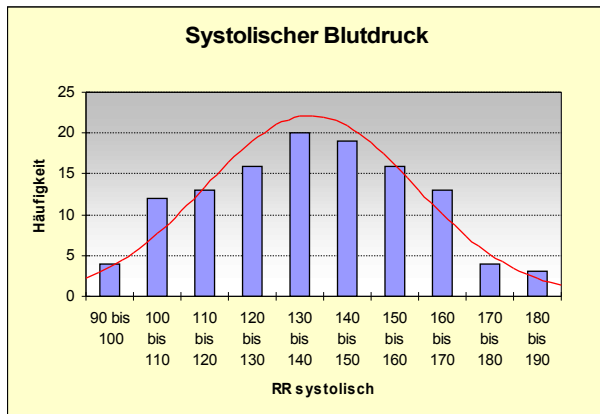
QS 2. Quartal 2009

Altersverteilung:



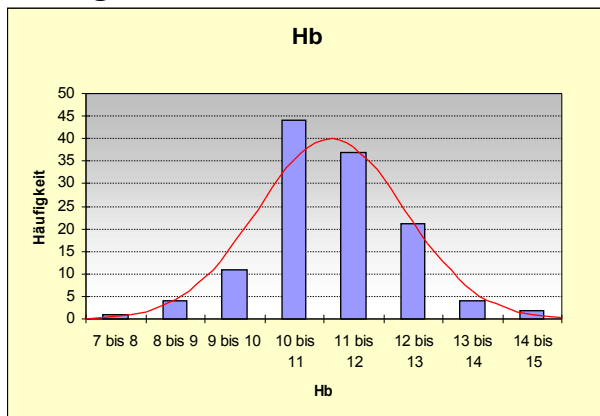
52,1 % älter als 70 32,2 % älter als 75 19,8% älter als 80

Blutdruck:

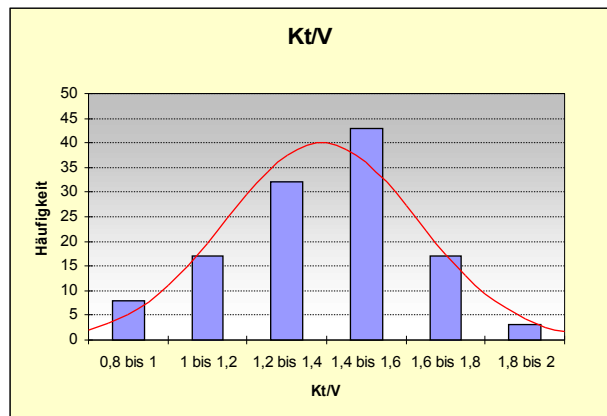


Mittelwert: 137 / 66

Hämoglobin:



KT/V:



12,9 % < 10g/dl – Mittelwert 11,2 ± 1,3

20,8 % < 1,2 – Mittelwert 1,41 ± 0,30

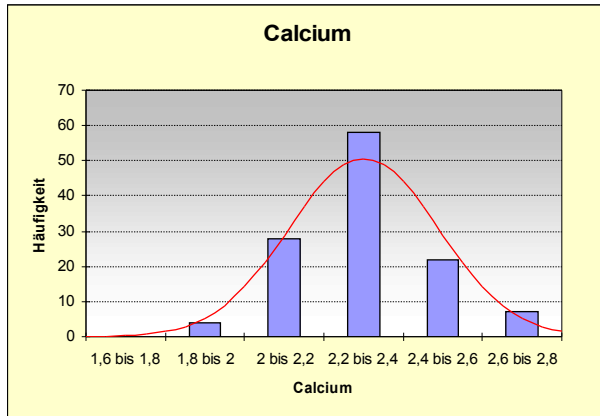
74% der Patienten erhalten Epo, mittlere Dosis 76,13 IU/kg KG und Woche

©Drs. Schwartz, Gruber, Lückhoff, Wiese

Mittwoch, 8. Juli 2009

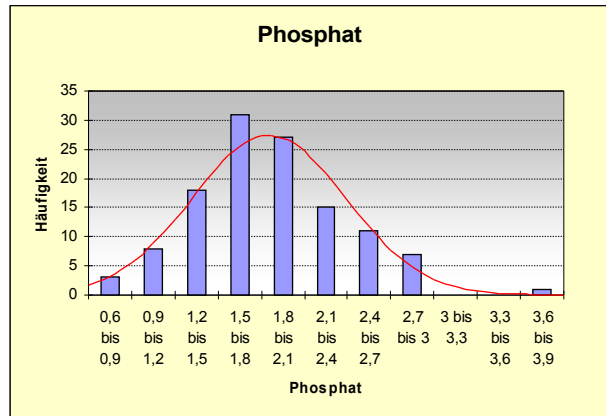
Übersicht QS-Daten Quartal 2/2009
Dialysezentrum Landshut

Calcium:



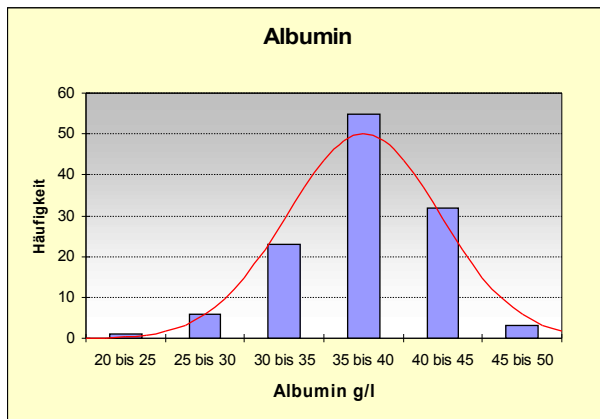
Mittelwert: 2,24

Phosphat:



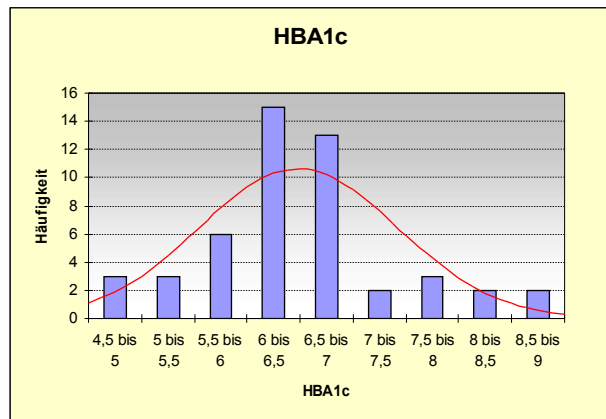
Mittelwert: 1,80 62% < 2,0, 49,6% < 1,8

Albumin:



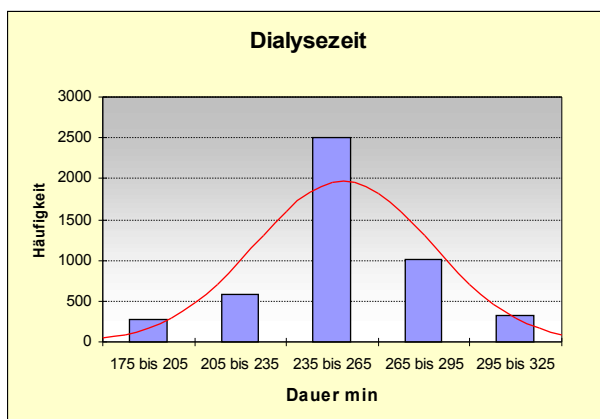
Mittelwert: 37,2 g/l – 70,8 % < 40 g/l

HbA1c:



Mittelwert: 6,54 81,6 % < 7%

Dialysedauer:



18,0 % **aller** Dialysen lagen unter 235 min - 18,3 % unter 240 min, 16,8% unter 220 min

Anzahl Krankenhaustage: 16,7 pro Patientenjahr