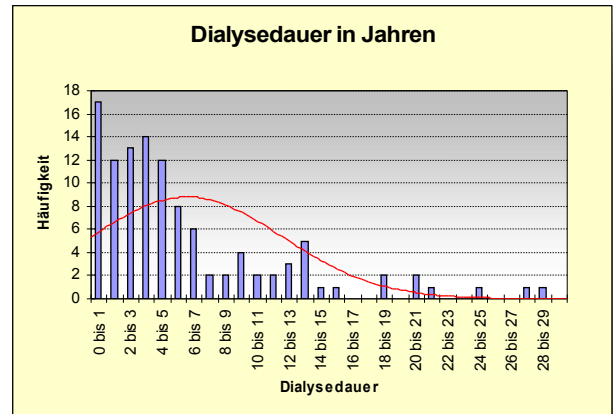
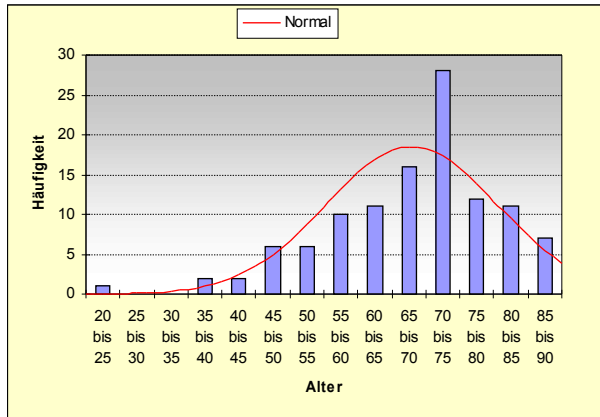


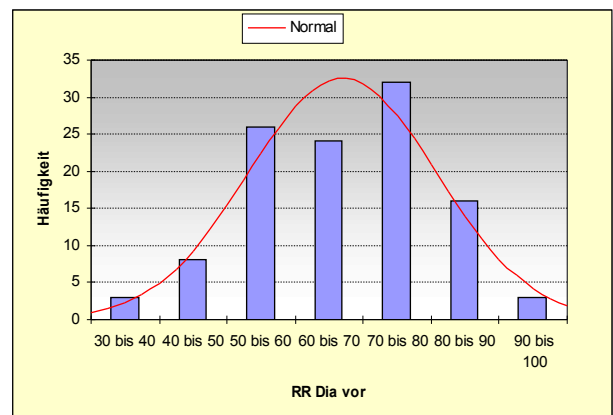
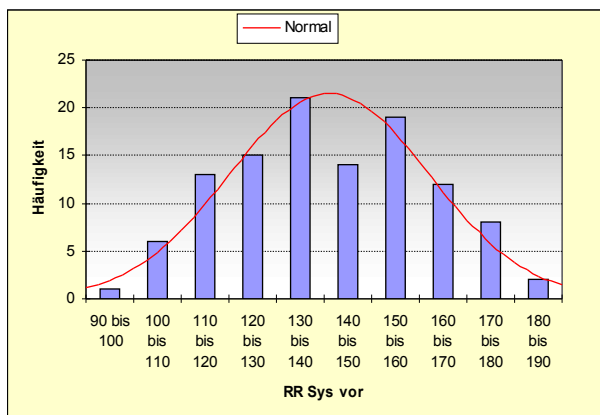
QS 2. Quartal 2008

Altersverteilung:



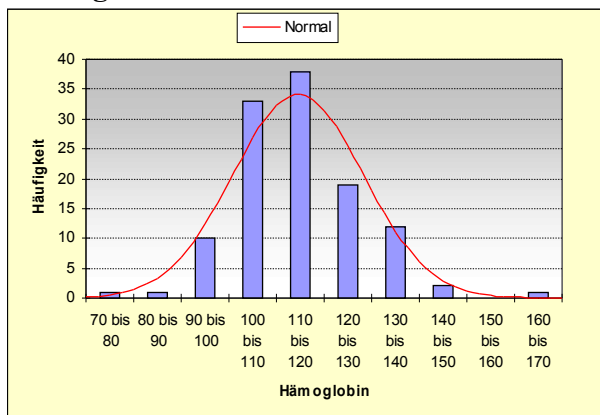
51,8 % älter als 70 26,8 % älter als 75 16% älter als 80

Blutdruck:



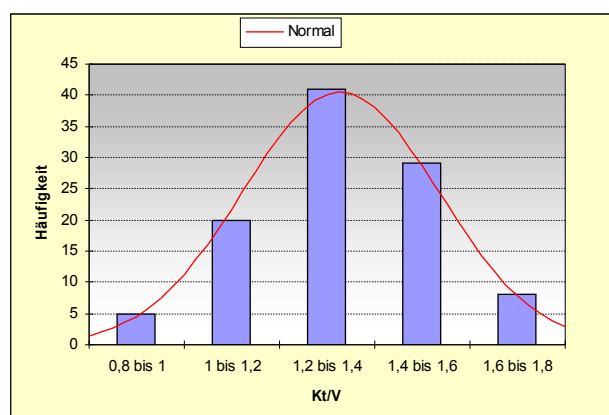
Mittelwert: 140/66

Hämoglobin:



10,3% < 10g/dl

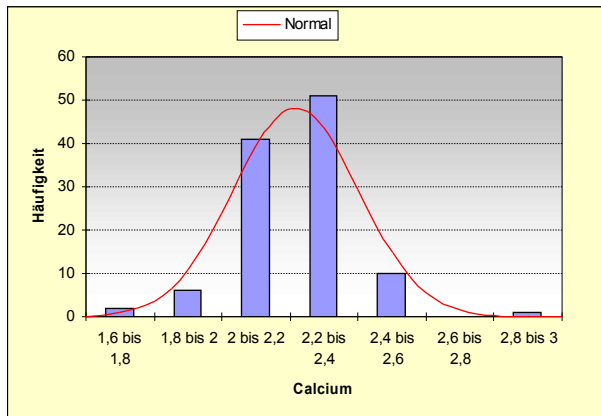
KT/V:



24,3% < 1,2

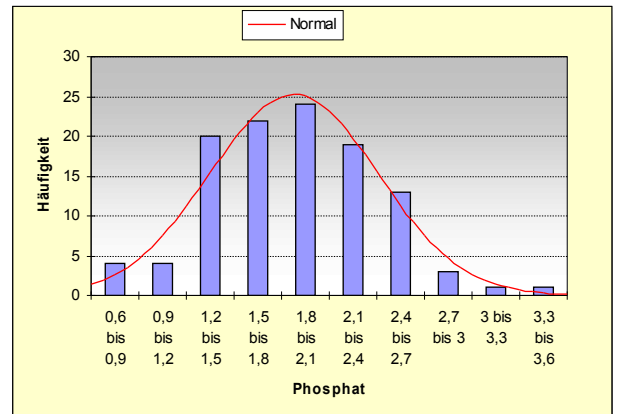
Übersicht QS-Daten Quartal 2/2008
Dialysezentrum Landshut

Calcium:



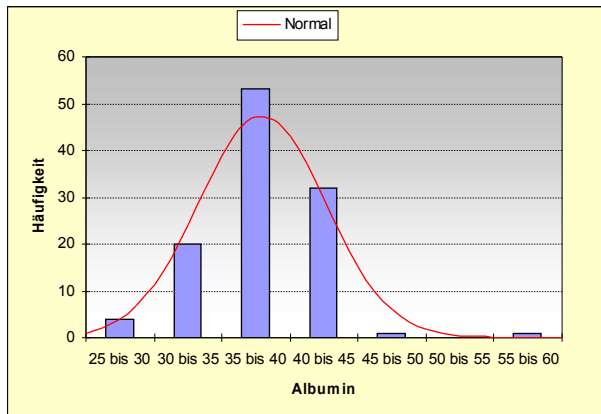
Mittelwert: 2,17

Phosphat:



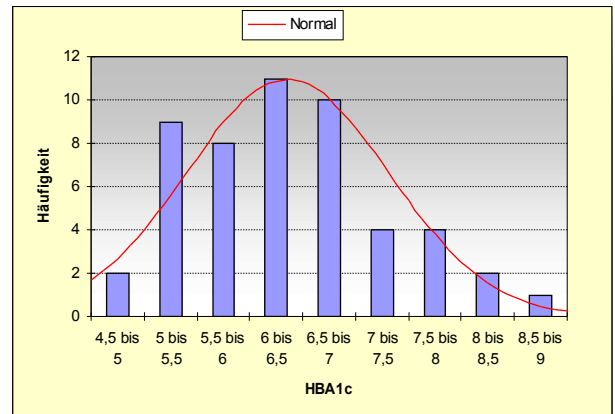
Mittelwert: 1,83 63% < 2,0, 45% < 1,8

Albumin:



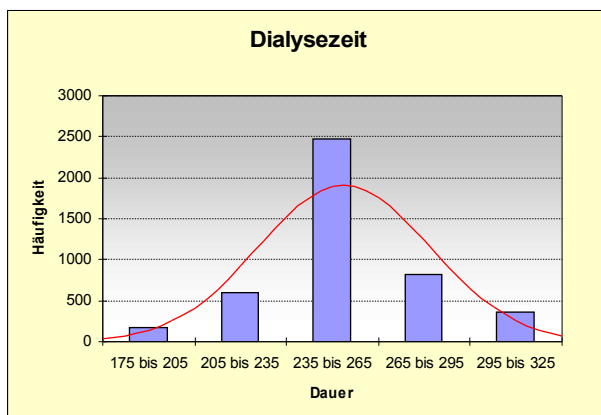
Mittelwert: 3,75 – 69,4% < 4 g/dl

HBA1c:



78,4 % < 7%

Dialysedauer:



17,6% aller Dialysen lagen unter 235 min - 18,3% unter 240 min