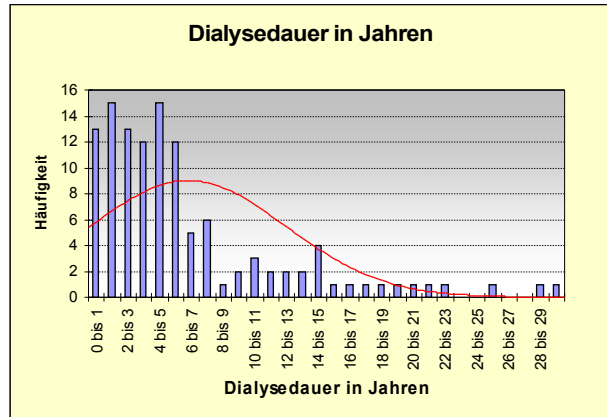
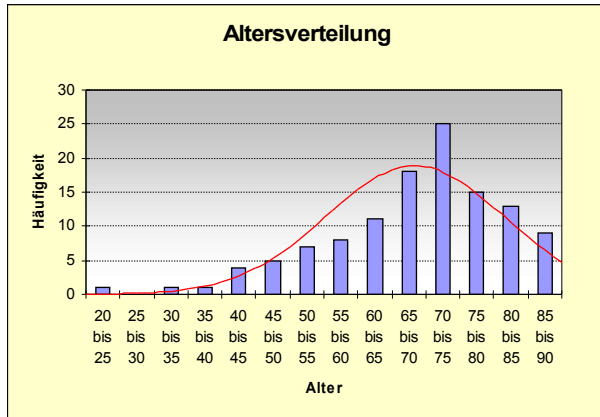


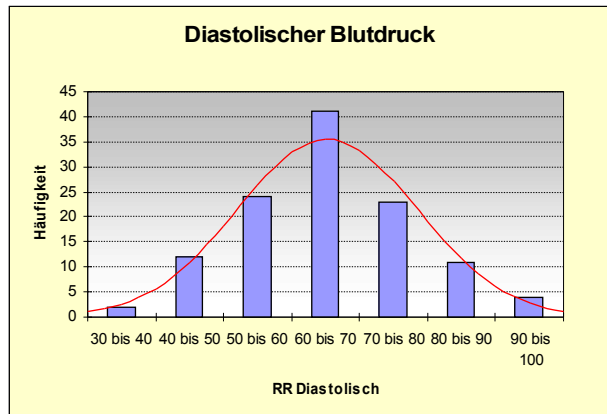
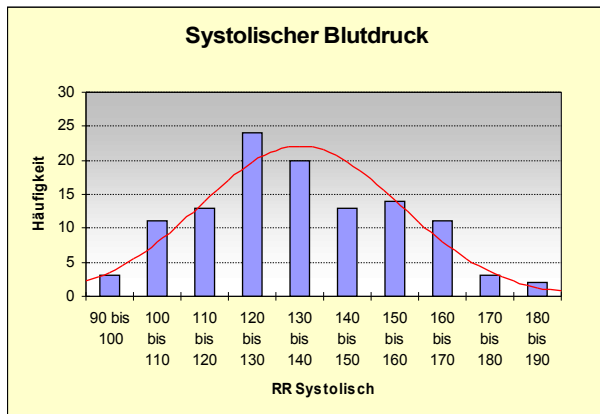
## QS 1. Quartal 2009

### Altersverteilung:



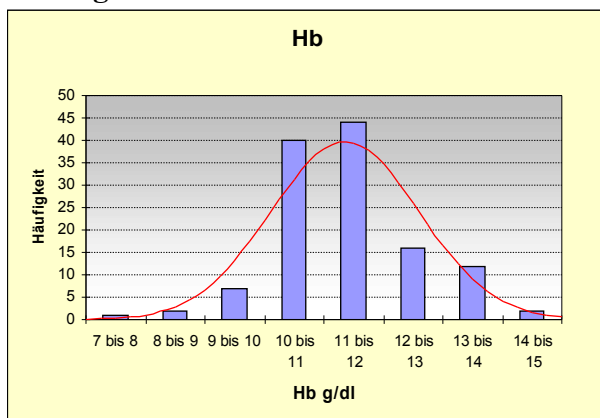
52,5 % älter als 70    31,4 % älter als 75    18,6% älter als 80

### Blutdruck:

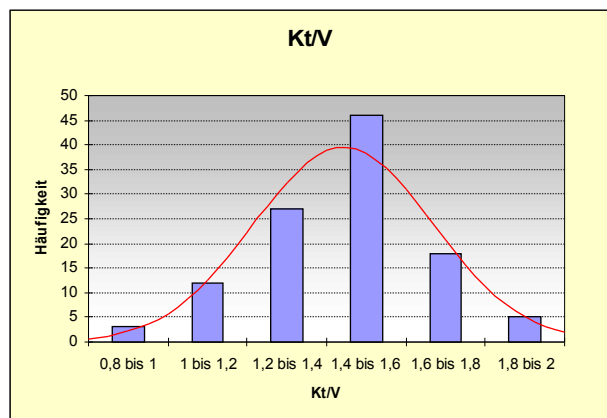


Mittelwert: 134,8 / 64,6

### Hämoglobin:



### KT/V:



8,1 % < 10g/dl – Mittelwert 11,4 ± 1,2

13,5 % < 1,2 – Mittelwert 1,46 ± 0,35

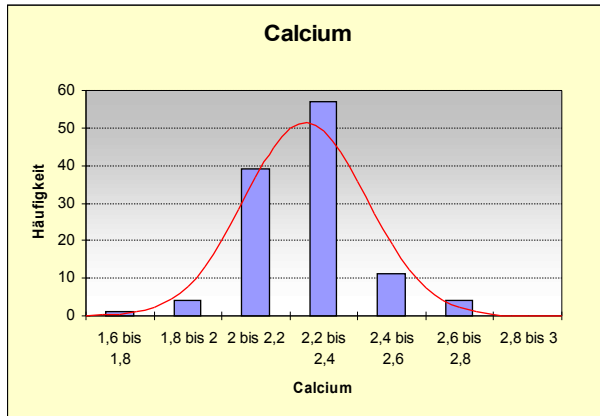
72% der Patienten erhalten Epo, mittlere Dosis 76,76 IU/kg und Woche

©Drs. Schwartz, Gruber, Lückhoff, Wiese

Mittwoch, 1. April 2009

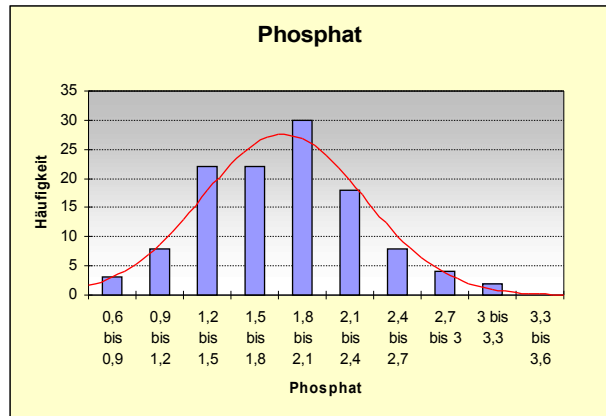
Übersicht QS-Daten Quartal 1/2009  
Dialysezentrum Landshut

**Calcium:**



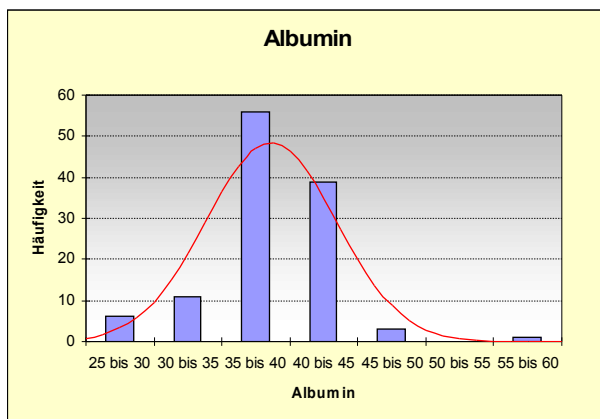
Mittelwert: 2,20

**Phosphat:**



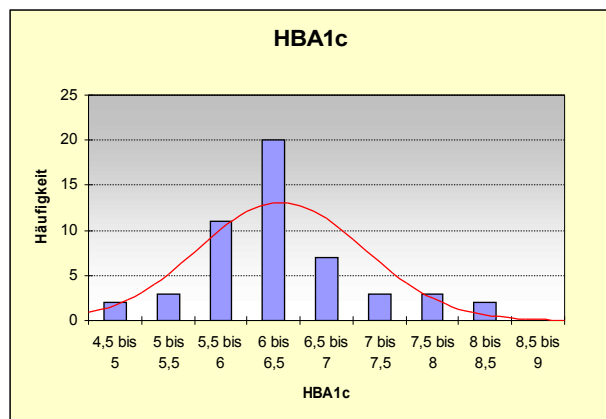
Mittelwert: 1,78 67% < 2,0, 46,6% < 1,8

**Albumin:**



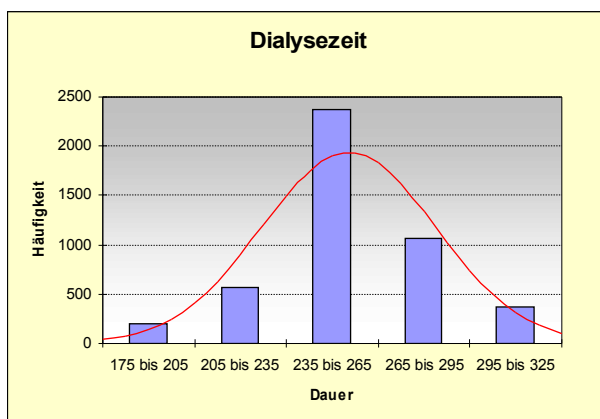
Mittelwert: 38,5 g/l – 62,9 % < 40 g/l

**HBA1c:**



84,3 % < 7%

**Dialysedauer:**



16,8 % **aller** Dialysen lagen unter 235 min - 17,1 % unter 240 min

Anzahl Krankenhaustage: 16,9 pro Patientenjahr