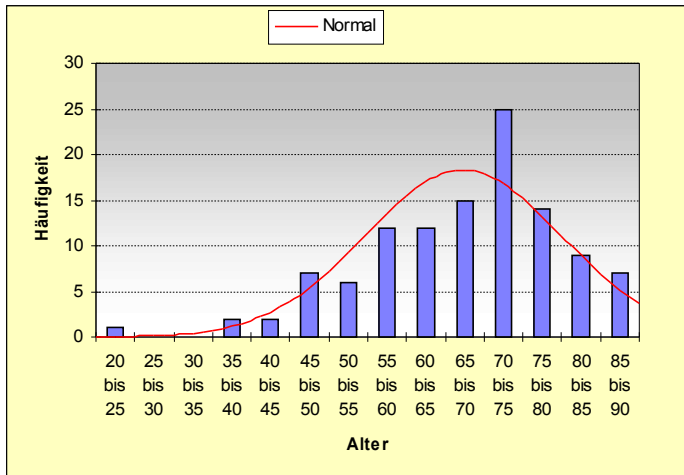
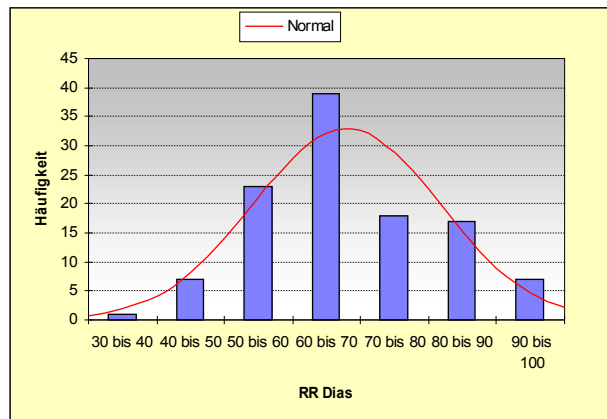
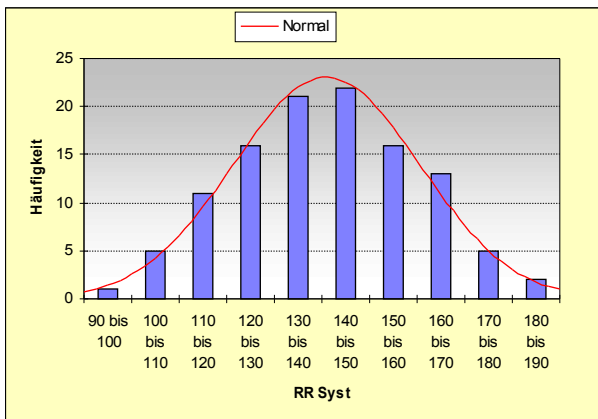


## QS 1. Quartal 2008

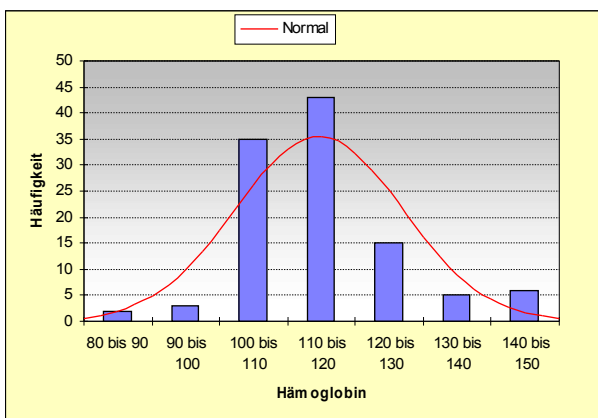
### Altersverteilung:



### Blutdruck:

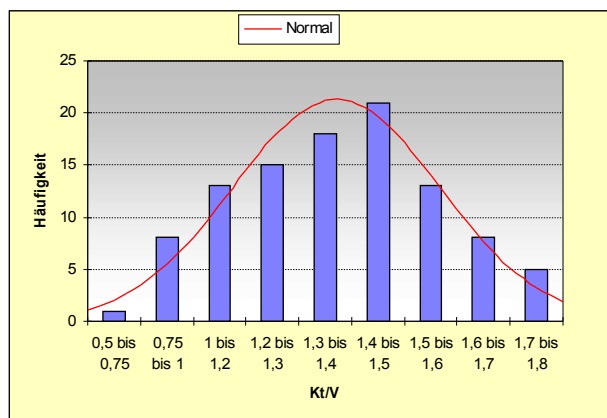


### Hämoglobin:



6,4 % < 10 g/dl

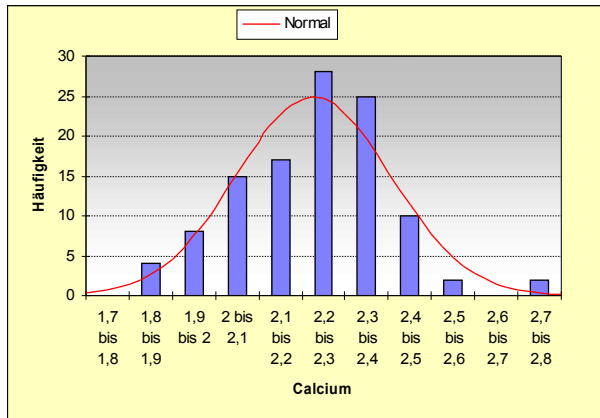
### KT/V:



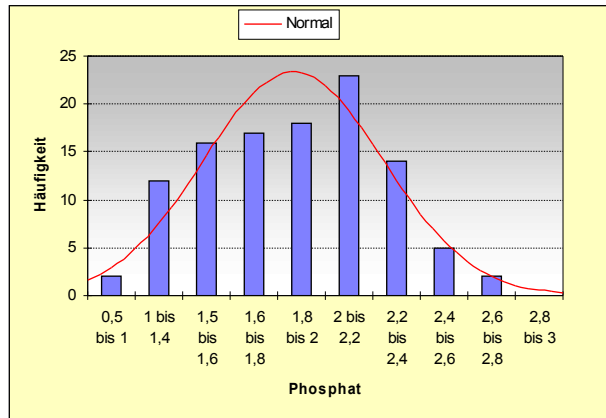
21,6 % < 1,2

Übersicht QS-Daten Quartal 1/2008  
Dialysezentrum Landshut

**Calcium:**

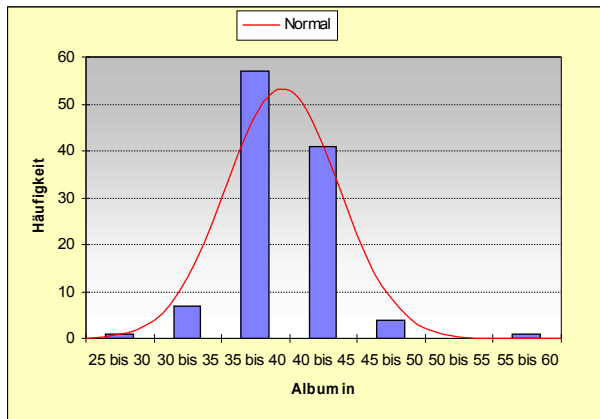


**Phosphat:**



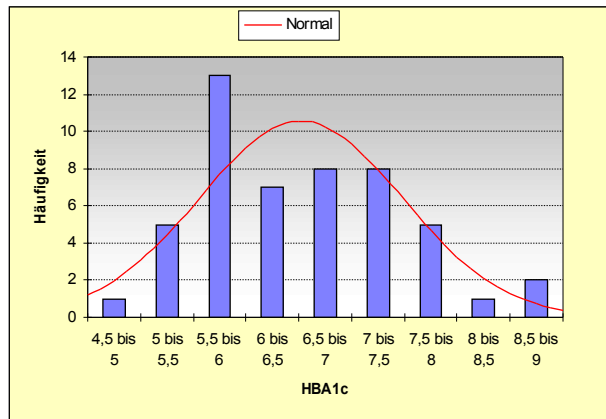
43,1% < 1,8 – 59,6% < 2

**Albumin:**



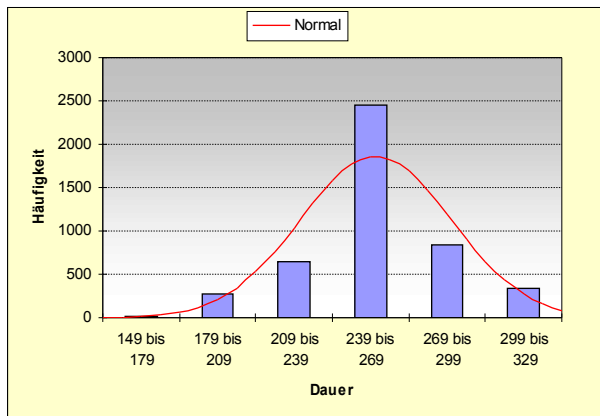
58,6 % < 4 g/dl

**HBA1c:**



68 % < 7%, insgesamt 94% < 8%

**Dialysedauer**



20,5 % weniger als 240 min